

ActIn Time Lite Junior

SQL Employee Management System

Shipped **FREE** with Microsoft SQL Sever Express



ActIn Time increases your company's productivity by improving your employees time keeping.

ActIn Time Lite Junior

ActIn Time is the UK's leading British manufactured Entry Level SQL Time & Attendance workforce management system for small businesses. This product suite contains everything you need, to help you efficiently organise and maintain accurate staff records in one simple, easy to use software package for up to 75 staff.

How it works!



- Employees clock using an array of clocking terminals.
- Clocking data is collected from the terminals via network.
- View and edit employee data.
- Produce reports to print or export to a file.
- Export payroll data to your Payroll Package.

ActIn Time Lite Junior - Main Modules

Attendance

Calculates all types of shift rules and overtime including flexible working hours i.e. Flexitime.



Absence Management

Track holiday entitlement, absence, lateness and core time infringements.



HR / Personnel

Keep all your personnel data in one place.



Access Control | Mustering

Secure your company's doors, barriers or entrance gates for Health & Safety.



Fire Roll Call

Automatically unlock doors, link to fire alarm and send a roll-call report in the event of a fire.



Reporting

Over 160 clear, concise, and user editable, reports, forms and graphs.



Job Costing

Monitoring of job and operations worked by employees.



(PIP) Personal Information Portal

Give employees access to their own attendance and absence information.



Other Main Modules Inc:

- Health and Safety
- Email Me!
- Employee Self Service
- Multi Site
- Multi Terminal
- Rostering
- Scripting
- Payroll Export
- Flexitime

ActIn Time Lite Junior - Hardware Terminals



Features

- Modern Design
- 700 Faces, 1000 Users - (Face Recognition)
- Proximity RFID Built In
- Keypad and Password
- 3" TFT Colour Display
- Built In Ethernet
- USB Download

The ActIn Time Lite Junior hardware terminals can be configured in the following ways:

Proximity - Card or Fob

Fingerprint - Finger Only, Finger, Card / Fob, Finger and Pin, Finger and Password

Face Recognition - Face Only, Face and Finger, Face and Pin, Face and Password

Additional Add 'ons' and Accessories

- Pre - Programmed system with import of employee details & up to 10 daily shift rules.
- Automatic Payroll Link to your preferred payroll software package i.e. Sage / Pegasus.
- GSM Modems
- External Readers
- USB Desktop Readers
- Employee Badges
- Card Racks
- ID Card & Printers
- ID Bureau Service
- ID Accessories & Supplies

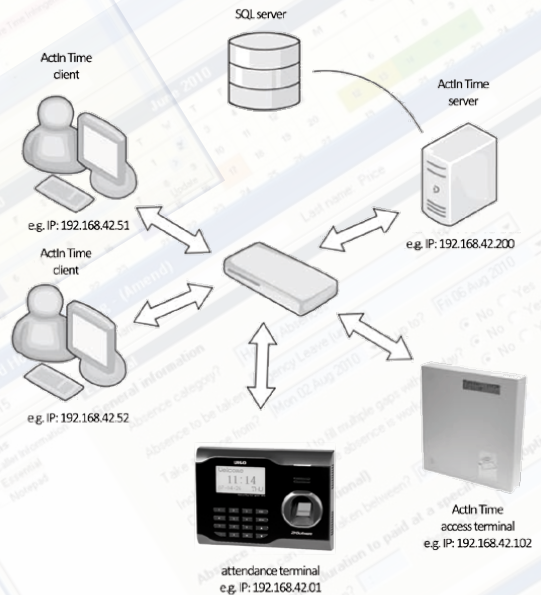
Specification

- Compatible with Windows 7, Vista & XP
- Servers 2008/2003/2000
- 32 & 64 Bit operating systems

Minimum PC & Server Requirements

- Processor - Pentium IV 2.5GHZ
- RAM - 1GB
- Hard drive Space (minimum 2GB available of C Drive for install) - 1GB
- SQL Version - Microsoft SQL MSDE (Shipped **FREE**)
- Compatible with - SQL Server 2000 / 2005 / 2008 32 / 64 Bit
- Colour Monitor Resolution - 800 X 600
- USB socket required (for dongle registration)

ActIn Time Lite Junior Schematic



wisegrove limited
workforce management solutions

60 Hoppers Road, London, N21 3LH
T: 020 8882 4522 F: 020 8886 1547
www.wisegrove.co.uk info@wisegrove.co.uk



Compatible with:
Microsoft SQL Server 2008



Shipped with the **FREE**:
Microsoft SQL Server 2008 R2 Express